



~ HIGHLIGHTS ~ NEWS ~ ARTICLES ~ DEPARTMENTS ~



Ocean Committee
Evey Hwang

In Port News – Transitions

Port Transitions: Through summer SSA/OICT with appointment system, nights gates and its \$30 per container fee to transition into better new normal. Conversely Everport continued their difficult transition with new management and system since beginning of year. And then there is TraPac. In April, the departure of Ports America saw the majority of carriers to SSA/OICT. The rest which went to TraPac tipped the terminal to congestion and some truckers have refused to take loads.

This month Port of Oakland confirmed TraPac has renewed their lease for Berths 30-32. Negotiating since 2014, the good news for the Port with TraPac's extension to 2029 includes the addition of Berths 25-26 and a transformation for TraPac terminal. With construction to start in December, the installation of new cranes to operate by April, reconfiguration for 11 total lanes, new gate entrance and new system...will transition TraPac to improved operations by September 2017. Also in development for TraPac is proposed appointment system and continuing night gates with fees with SSA/OICT model.

Carrier Transitions: Since Hanjin bankruptcy, many industry experts stated continued overcapacity would produce further alliances and mergers. The most recent consolidation has Mitsui O.S.K. Lines (MOL), Nippon Yusen K.K. (NYK Line) and Kawasaki Kisen Kaisha (K-Line) announcing their plans to merge. With 3 mega alliances now, much speculation for resulting rates, route changes and further transitions for carrier operations.

Street Turns Transitions: Brokers and Forwarders daily book truckers to pull import containers from terminals for deliveries however many of us are unaware of the at times burdensome process for returning the empty container and chassis. As well for exports containers, drivers going into terminal lines to get an empty. Street turns allow the truckers to do equipment exchanges outside the terminals. In recent years street turns have become essential in avoiding equipment detention on behalf of import and export shippers.

Jupigo is a free innovative app (mobile and web) developed by a community-minded port drayage company facilitates easy listing and matches for equipment street turns. There is an estimated 1000+ street turn listings monthly. *Jupigo* app makes street turns efficient. In order to maximize matching, active participation from port truckers is needed. CBFANC is not affiliated with this app but promotes the benefit *Jupigo* supports for Oakland's trucking community. Click [here](#) for info on *Jupigo*.

Politics in Transitions: The election happened. What will the new administration mean for economy, trade, our industry? Much at stake and your participation in the process is more important than ever. Plan to join CBFANC and Pacific Coast Council for the annual PCC Mission to DC February 25-28, 2017.

Questions or Concerns for Ocean Committee? Contact info@cbfanc.org

CBFANC Seminar Recap

Renata Rios

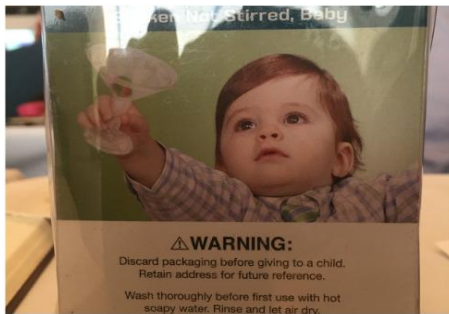
CPSC Seminar 10-26-2016

Last month, CBFANC hosted a seminar on CPSC, Consumer Product Safety Commission. There were about 27 attendees to listen to John W Cheung, Compliance Investigator from the San Francisco office and Dario Rocha, Compliance investigator from Washington D.C. They spoke about the importance of CPSC and how it concerns our safety at all levels and all areas of trade. They develop and enforce standards for banning products, issuing recalls, conducting research, and education to the public.

During the presentation, they explained the CPSC does not have authority over tobacco, medical, food and drugs, boats, firearms, pesticides, workplace products, and alcohol products. In general CPSC look after shipments that are for personal use, consumption, or consumer enjoyment in a residential, school, recreational environment. Does not include products intended for commercial or industrial use, unless sold to or used by consumers more than occasionally.

At the end of the presentation there was a show and tell of how lead is measured in commodities. It looks like a type of gun that can read the amount of lead on the spot which then determines if it requires further inspection/confiscation, etc. CPSC not only measures lead but also safety in general. One interesting item that was brought in was a baby rattle in the shape of a martini glass with "ice" and an "olive" inside. This was confiscated due to the danger of it shattering while a baby is using it. There were several Hello Kitty items that were high in lead count in the paint used on the actual outfit and items, such as purses. Other items, such as purses were marked to be used for ages 6 and up but was actually for younger kids. Another case was a hooded sweater sized as extra-large yet it would probably fit a small child, but the sweater had drawstrings which would pose a danger for a small child. It was confiscated for misinterpretation of age use

and the safety of the drawstrings. One other interesting item that was presented was a tea cup. If there is lead in the paint on the outside, that is CPSC jurisdiction. But for lead count on the inside of the tea cup, that is left up to FDA. CSPC cannot determine lead for the inside of the tea cup.





It is time to vote for your favorite candidate to represent your interest on the CBFANC Board.

Dear Primary Designee,

It is time to vote for your favorite candidate to represent your interest on the CBFANC board.

Three of the 9 director positions are up for election.

This year we have an excellent slate of candidates. Please vote for no more than 3 candidates.

Ballots received with more than three votes cast will be disqualified.

The candidates are incumbent Felicia Addison (International Freight Services), Evey Hwang (Ag Customs Brokerage), Lauren Bustamante (Seaspace Intl Forwarders) & Danny Ang (Hankyu Hanshin Express)

The candidates biographies are as follows.

[**Vote BOD 2016 Candidates Here!**](#)

-->>[Click Here to Vote!](#)<<--



Holiday Party & Annual Meeting

Join us for the celebration!

[Holiday Luncheon Flyer Here!](#)

CBFANC Annual Meeting & Christmas Luncheon

Tuesday, December 6th 2016
11:30AM - 1:30 PM

[Click Here to Register!](#)

Join your colleagues for a holiday celebration luncheon and your annual membership meeting. Your elected CBFANC board will be announced!

Cost:

**Members \$45
Non-Members \$55**

Location:

El Rancho Inn
Terrace Cafe
1100 El Camino Real
Millbrae, CA 94030

Save Christmas for a child in need!
Annual Toy Drive will be: Toys for Tots

Bring an unwrapped toy

[Click Here to Register!](#)

[Add Attendee Information!](#)



Holiday Luncheon / Annual Meeting

[Holiday 2016 Luncheon Flyer Here!](#)

Come Join the Fun!
Hear All About Our Past, Present and Future

[**Click Here to Register!**](#)

When:

Tuesday December 6, 2016
11:30 AM - 1:30 PM

Where:

Best Western El Rancho Inn
Terrace Café
1100 El Camino Real, Millbrae CA

[Add Attendee Information!](#)

Members @ \$45.00
Non-members @ \$55.00

*****Bring an Unwrapped Toy to benefit Toys for Tots and get a free raffle ticket*****

Menu Selections:

Starter:

Tossed Green Salad

Entree ~ choice of ¶:

- ¶ *Spinach and Mushroom Quiche ~ With Rosemary Roasted Potatoes*
- ¶ *Panko Crusted Red Snapper ~ With a Shallot Butter Sauce & Wild Rice Pilaf*
- ¶ *Chicken Marsala ~ With Marsala Sauce and Wild Rice Pilaf*
- ¶ *Beef Brochette ~ Beef Tenderloin with Mushrooms and Bell Peppers in a Merlot Sauce & Wild Rice Pilaf*

Dessert:

Apple Normand

Plus Awesome Raffle Prizes!



PORT OF SAN FRANCISCO INFORMATION NOTICE

Distribution: Port of Oakland, Brokers, Warehouses, Trade Community

Number: 728-16-06

Issue Date: October 14, 2016

Contact Point: U.S. Customs and Border Protection, Agriculture at (510) 337-9700

Supersedes: Not Applicable

Expires: When Superseded

SUBJECT: U.S. Customs and Border Protection Containerized Cargo Fumigation Procedures

PURPOSE:

To notify the importing trade community of the Area Port of San Francisco/Oakland of the procedures for handling containerized cargo for fumigation as it pertains to the Port of Oakland.

BACKGROUND:

U.S. Customs and Border Protection (CBP) and the U.S. Department of Agriculture (USDA) work together to protect the Nation's agriculture resources by preventing the introduction of harmful pests and diseases into the U.S. To carry out this function, commodities which require treatment to mitigate the pest or disease risk are at times referred to a USDA-approved fumigation facility. Once fumigation is completed per USDA standards, the cargo can be released into the commerce of the U.S. Fumigation facilities are privately owned although approved and regulated by USDA and county agriculture.

CURRENT STATUS:

CBP's general procedures for moving containers to a USDA-approved treatment facility are as follow:

a) Shipments Requiring Precautionary Treatment

- CBP Agriculture will review the entry documents to ensure the shipment has the proper documentation and certifications per USDA regulations (e.g. import permits, phytosanitary certificates, etc.). The importer or broker should submit all relevant documents required for entry to prevent delays in the process.
- The decision to treat is left to the discretion of the USDA, Plant Health Safety Specialist (PHSS).
- Shipments that require precautionary treatment under current USDA regulations may be transferred to a Centralized Examination Station (CES) for inspection before they are allowed to move to a USDA-approved treatment facility.
- CBP will generate the proper permits to transfer (PT) electronically through CBP systems. (* Please note that the container cannot move to the CES or the treatment facility unless CBP has transmitted the PT to the terminal systems.)
- CBP will inform USDA and the treatment facility of the shipment requiring treatment.

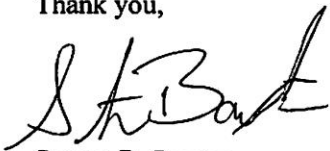
- The precautionary treatment will be monitored by USDA personnel and when the treatment is completed, USDA will notify CBP.
- Once the notification has been received, CBP will release the shipment

b) Actionable Pest Found in the Shipment with Treatment Option Available in the Port

- Shipments located in the various examination sites (e.g. at the CES, container freight station, terminal, etc.) where an actionable pest has been intercepted will be issued PPQ form 523 Emergency Action Notification with the appropriate treatment schedule prescribed by USDA
- The decision to treat is left to the discretion of the USDA, Plant Health Safety Specialist (PHSS).
- When the importer selects TREATMENT on the PPQ form 523, CBP will issue a PT electronically to have the shipment transferred to a USDA-approved treatment facility.
- When the treatment prescribed on the EAN has been completed, USDA will notify CBP.
- Once the notification has been received, CBP will release the shipment.

If you have any questions regarding this information notice, please direct them to the CBP Agriculture Unit at (510) 337-9700.

Thank you,



Steven D. Baxter
(Acting) Area Port Director
San Francisco



Customs Brokers and Forwarders Association of Northern California

Still Doing Our Part

With the ongoing transition to ACE and other challenges at our port, we struggled to put together our annual Charity Golf Tournament this year. However, we still wanted to give back to the community and have donated \$5,000 to SafeHouse. SafeHouse is a wonderful organization whose mission is to assist women who have been the victims of sexual or other physical abuse.

With the support our sponsors have shown over the years, we are reaching out in the hope that some of you will be able to contribute to this valuable program.

Here is a message from the director about their future project:

SafeHouse on the Street: Our current program is small and personalized, serving only 10 women at a time. Yet, the waiting list is long, and many of the women on it need services even before a spot opens up for them. Compounding the problem, many local programs that formerly supported sexually exploited women have either closed, been absorbed into other recovery programs, or offer very limited services.

In response to these trends, SafeHouse plans to expand its services to help women still on the street, before they walk through our doors. SOS would offer weekly groups, individual counseling, healing activities, referrals to other resources, etc. Secondly, SOS would give our case management staff an opportunity to work with women on the waitlist and assess their readiness for the full SafeHouse program.

These are needs and programs that cannot be funded with our present government grants, and we are turning to our generous community of friends to bring this program to life. SafeHouse has already been offered space in the Tenderloin at the City Hope Community Center, thanks to Rev. Paul Trudeau of City Church San Francisco. SafeHouse will also be approaching organizations in the Mission to secure an additional location for SOS some time there as well. We hope you will consider becoming a founding member of the SOS “team” and make a donation for this project.

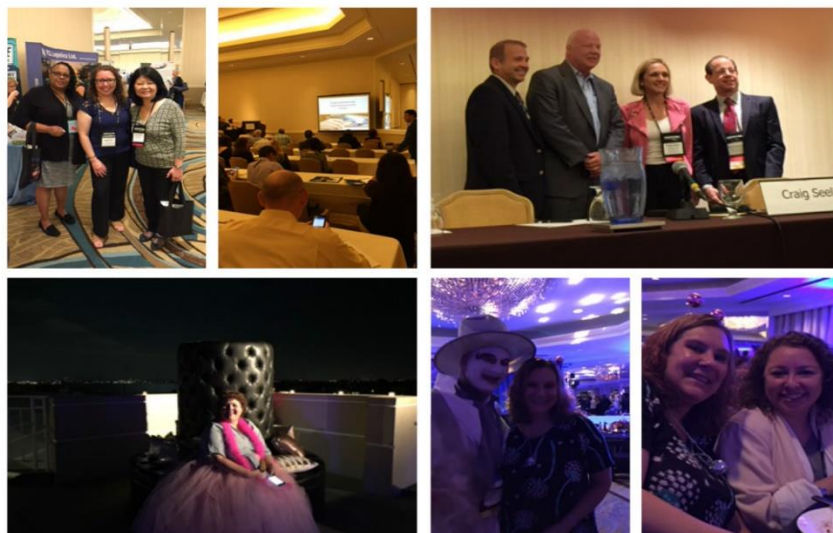
Whether your company or you personally, every donation is greatly appreciated.

Here is the link they can go to make a contribution:

<http://sfsafehouse.org/index.php/get-involved/support-safehouse>

CBFANC @ WESCCON

Very Special Thank You to **Kat Natividad**
(She saved the WESCCON Pic Day! Due to us all studying so very hard!)



2016 Educational & Program Events

(Working Calendar as of November 22, 2016)

December 6th

Holiday Luncheon – [Click Here to Register!](#)

Best Western El Rancho Inn, Millbrae

December 14th

Harmonized Tariff Classification - [Click Here to Register!](#)

CitiGarden Hotel, South San Francisco, CA

January 7th-March 20th 2017

CHB Spring Exam Prep Course – [Click Here to Register!](#)

CitiGarden Hotel, South San Francisco, CA

February 2nd 2017

State of the Port

Hilton, Burlingame, CA



Customs Brokers & Freight Forwarders Association of Northern California is now on Twitter!

